



Property type : Villa

Location : Benissa

Bedrooms : 4

Bathrooms : 4

Swimming pool : Yes

Garden : Private

Orientation : South

Views : N/A

Parking : Carport

House area : 267 m²

Plot area : 1448 m²

✓ Close to sea

✓ Lift

✓ Barbecue

✓ Terrace

✓ Garage

✓ Airconditioning

Project new luxury villa with panoramic sea views from Moraira to the Peñon de Ifach, only 5 minutes drive to the sandy beach La Fustera.

This modern villa with stunning sea views is located on a quiet sloping plot. For that reason no building can block the sea views.

The villa consists of several cubes and has a total of 267,50 m² spread over 4 levels with terraces and a courtyard with green areas to give a lot of freshness to the house. The distribution is as follows.

Covered floor: Here is the hall with stunning sea views with staircase and elevator.

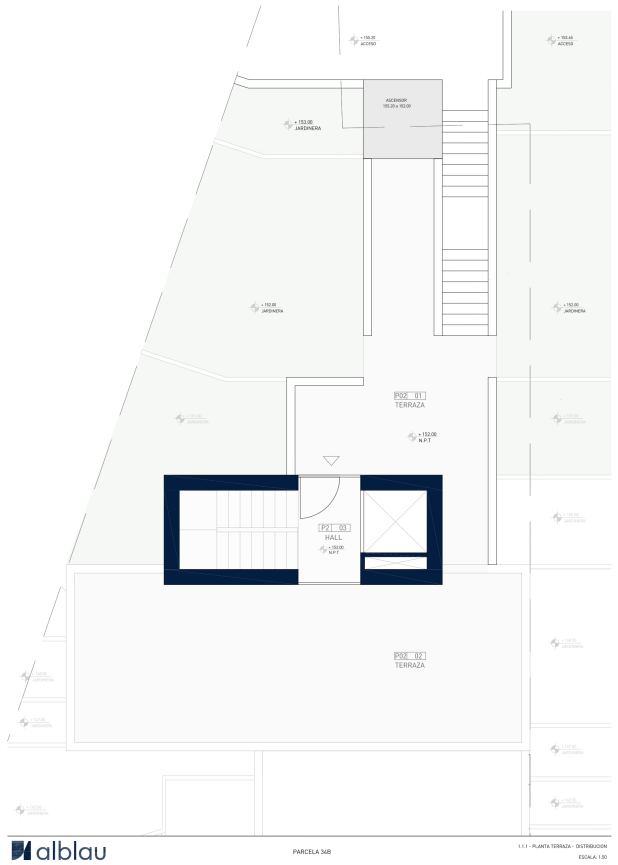
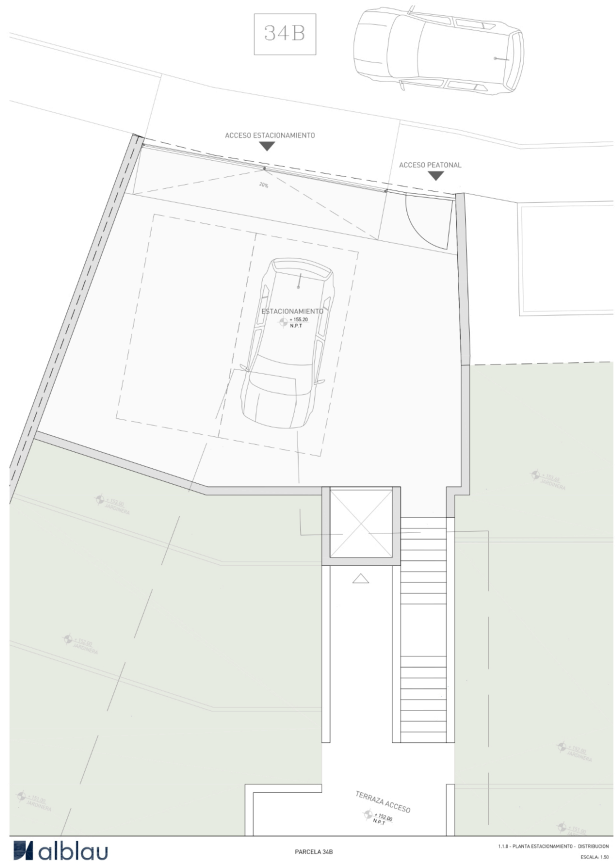
Upper floor: On this floor there are 2 bedrooms en suite.

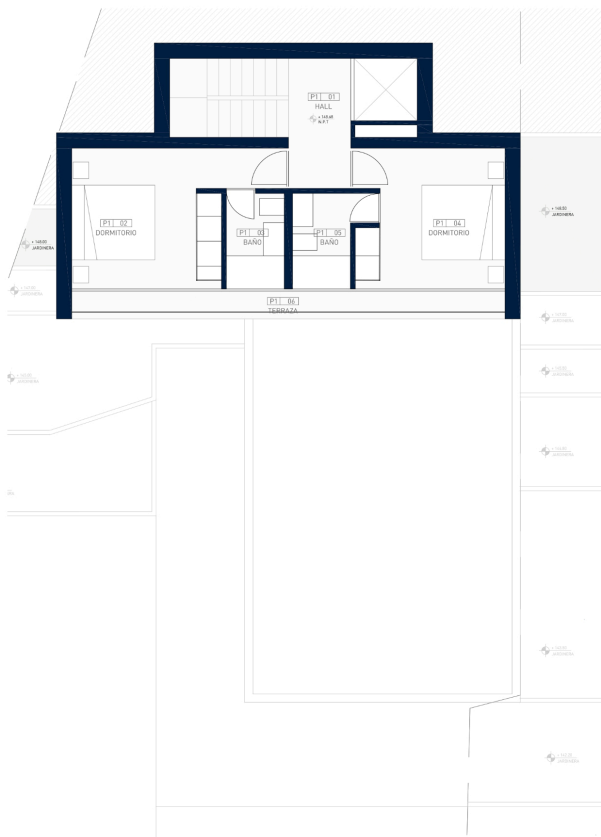
First floor: On this floor there are 2 more bedrooms en suite and a laundry room. One of the suites is the master bedroom with access to a terrace where you can enjoy the views of the Mediterranean.

Semi-basement floor: Here is located the day area, open kitchen with island, dining and living area, toilet and storage room. From this area there are views to a patio with access through a glass door, a perfect place for a vertical garden. From the living room you reach the terrace with BBQ area and the infinity pool with spectacular sea views. The villa includes high qualities such as underfloor heating with heat pump, ducted air conditioning, luxury kitchen etc.

Do not hesitate to contact us for more information.



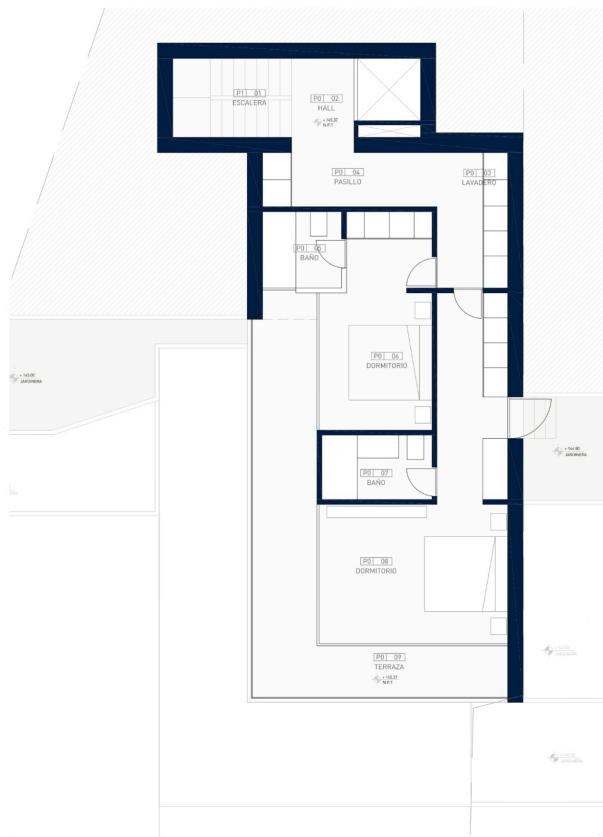




alblau

PARCELA 3AB

1.1.2 - PLANTA ALTA - DISTRIBUCION
ESCALA 1:50



alblau

PARCELA 3AB

1.1.2 - PLANTA BAJA - DISTRIBUCION
ESCALA 1:50