

**Property type :** Villa

**Location :** Javea

**Bedrooms :** 3

**Bathrooms :** 3

**Swimming pool :** Private

**Garden :** Private

**Orientation :** N/A

**Views :** N/A

**Parking :** N/A

**House area :** 218 m<sup>2</sup>

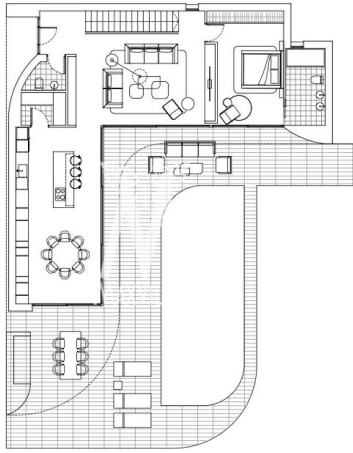
**Plot area :** 1000 m<sup>2</sup>

✓ Terrace

This stunning architectural villa features clean lines, floor-to-ceiling windows and organic curves that open out onto a private pool and landscaped garden. The spacious, open-plan layout offers abundant natural light, flowing effortlessly from the chic living spaces to the spacious outdoor lounge and dining areas. Upstairs you will find 3 bedrooms with direct access to sun-drenched terraces.

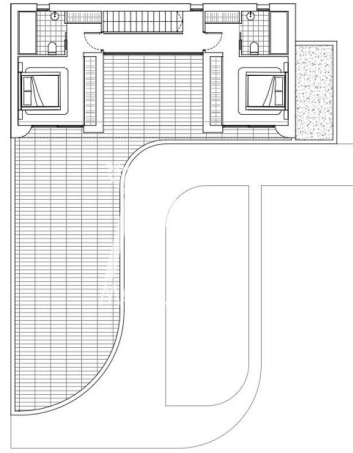
This villa offers privacy and comfort and is just a few minutes drive from beaches, restaurants and shops.





Superficie	Construcción
PLANTA BAJA	124.05m <sup>2</sup>
VIVIENDA	14.75m <sup>2</sup>
VOLADIZOS	23.23m <sup>2</sup>
PORCHES	
TERRAZA	75.15m <sup>2</sup>
PISCINA	40.73m <sup>2</sup>
PLANTA ALTA	65.98m <sup>2</sup>
VIVIENDA	65.98m <sup>2</sup>
VOLADIZOS	5.98m <sup>2</sup>
TERRAZA	66.63m <sup>2</sup>
ACABADOS EXTERIORES	
HORM. IMPRESO	79.07m <sup>2</sup>
ACERA	34.08m <sup>2</sup>

PLANTA BAJA



Superficie	Construcción
PLANTA BAJA	124.05m <sup>2</sup>
VIVIENDA	14.75m <sup>2</sup>
VOLADIZOS	23.23m <sup>2</sup>
PORCHES	
TERRAZA	75.15m <sup>2</sup>
PISCINA	40.73m <sup>2</sup>
PLANTA ALTA	65.98m <sup>2</sup>
VIVIENDA	65.98m <sup>2</sup>
VOLADIZOS	5.98m <sup>2</sup>
TERRAZA	66.63m <sup>2</sup>
ACABADOS EXTERIORES	
HORM. IMPRESO	79.07m <sup>2</sup>
ACERA	34.08m <sup>2</sup>

PLANTA ALTA