

Property type : Villa

Location : Moraira

Bedrooms : 5

Bathrooms : 4

Swimming pool : Yes

Orientation : N/A

Views : N/A

Parking : Carport

House area : 381 m²

Plot area : 1246 m²

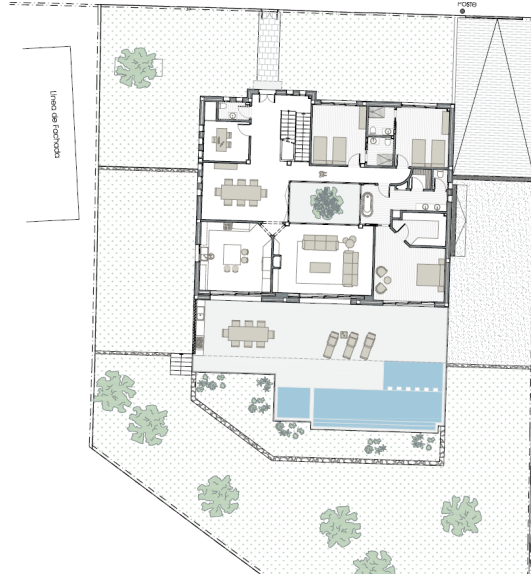
Plot: 1,246' 46 m² Estate: 381' 11 m² Bedrooms: 5 Bathrooms: 4 Toilet: 1 Detached single-family house on a 1,246.46 m² plot consisting of a basement, a ground floor and an upper floor. The basement is divided into a garage, a machine room, a gym, a laundry room and a multipurpose room with a toilet with a total constructed area of 88.20 m². The ground floor has a central open patio around which the rooms are organized. It is distributed in a hall, living room, dining room, kitchen, office, guest toilet, master bedroom with en-suite bathroom and dressing room and two double bedrooms with two en-suite bathrooms. All this supposes a constructed area of 244.74 m². The upper floor has two bedrooms and a bathroom, with a constructed area of 48'17m². The house has an infinity pool, a children's pool and a jacuzzi on its plot. It has underfloor heating and pre-installation of air conditioning for split-type devices.



Carril Compartiment



ITO
FAMILIAR AISLADA - TEJALADA

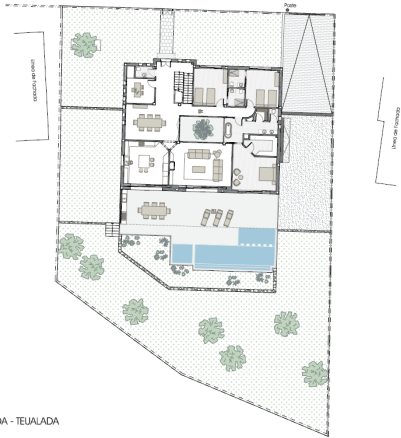


Carril Compartiment



ITO
FAMILIAR AISLADA - TEJALADA

Carril Compartiment



EMPLAZAMIENTO
VIVIENDA UNIFAMILIAR AISLADA - TEJALADA
Escala: 1:200

