



Property type : Villa

Location : Moraira

Bedrooms : 4

Bathrooms : 4

Swimming pool : Private

Garden : Private

Orientation : South

Views : Sea views

Parking : Private

House area : 460 m²

Plot area : 13536 m²

Airport : 75

Beach : 4

City : 4

- ✓ Double glazing
- ✓ Central heating

- ✓ Close to golf
- ✓ White goods

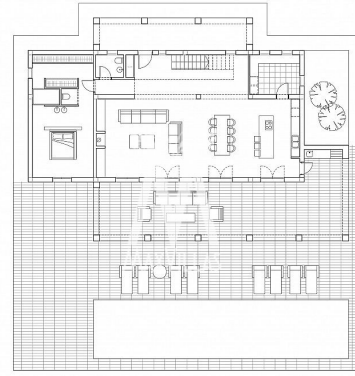
- ✓ Fitted wardrobes
- ✓ Airconditioning

This Mediterranean style villa has 3 floors which are connected with an internal staircase. It has a spacious open-plan living-dining-kitchen area. The kitchen is fully equipped and has a cooking island. It has 4 bathrooms and a guest toilet. The property also has a basement and utility room. It has air conditioning throughout the house (conduct) and central heating. Automatic entrance gate with separate pedestrian entrance and intercom. On the same level as the main house is the pool and a large terrace.



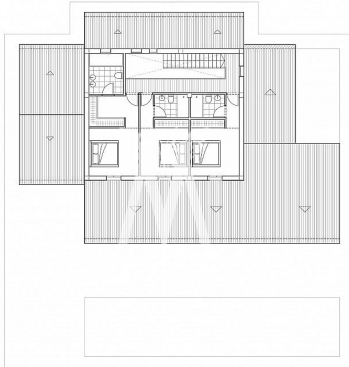


Exp. groups		13.5d:4000	
Substrates	Concentrations	Sulfatolactone	Oxyproctin
Portia eggs			
Vanessa	148.33 mg/l	149.81 mg/l	148.19 mg/l
Portia	25.84 mg/l	25.84 mg/l	25.84 mg/l
Portia 2	77.87 mg/l	77.07 mg/l	77.07 mg/l
Portia Ato			
Vanessa	97.06 mg/l	97.39 mg/l	-----
Isotri		346.35 mg/l	346.35 mg/l



Super-jerome		13.814.820-102	
Superficie	Caulchabado	Colchabado	Caulchabado
Parqueo (Superficie)			
Vehículo	148,85 m ²	148,85 m ²	148,85 m ²
Paseo 1	29,84 m ²	29,84 m ²	29,84 m ²
Paseo 2	33,67 m ²	33,67 m ²	33,67 m ²
Parqueo (Área)			
Vehículo	87,60 m ²	87,60 m ²	87,60 m ²
Instal.		344,26 m ²	344,26 m ²

(pna.2012/100)



Superficies	Construidas
Pista faja	
Vivero	168.35 m ²
Parque 1	23.84 m ²
Parque 2	77.07 m ²
Terreo	147.05 m ²
Piscina	48.08 m ²
Acera	43.62 m ²
Pista Atp	
Vivero	97.08 m ²
Pista Fútbol	
Vivero	81.54 m ²
Bodega	12.68 m ²

